

Command-A-Pitch™ Variable In-flight Vane Axial Fans



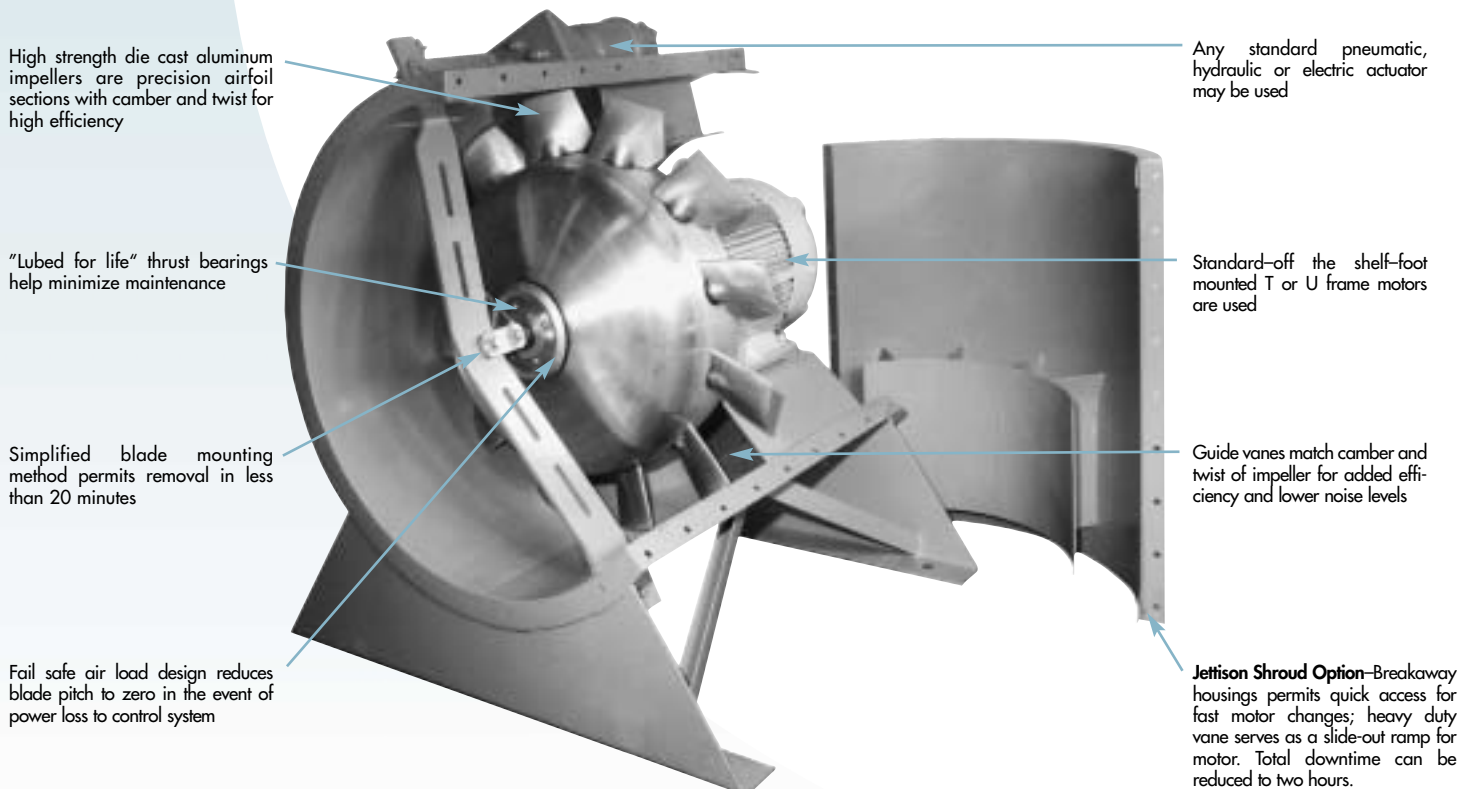
Performance proven in thousands of applications

Command-A-Pitch™ Variable In-flight impellers are mounted in our popular vane axial fan housings, performance proven over many years in the most demanding environments. Housings are heavy gauge hot rolled steel, continuously welded in accordance with **Section 9, A.S.M.E. Code** to minimize friction losses and to enhance performance. Flanges on housings permit quick fastening to flexible duct and other accessories without special tools or skills.

Other outstanding advantages of Strobic Air variable in-flight vane axial fans:

- ① **LONGER BEARING LIFE** due to unique reducing blade angle modulation created by the air load which reduces thrust across motor and hub bearings.
- ① **DRASTICALLY REDUCED MAINTENANCE SCHEDULE** requires only biennial lubrication of the actuator sleeve plus standard motor maintenance.
- ① **CONTROLS AND ACTUATORS** from any manufacturer may be used with Command-A-Pitch, permitting centralized control system responsibility and greater engineering design flexibility.
- ① **STANDARD, OFF-THE-SHELF REPLACEMENT PARTS** (motors, bearings and bushings) are non-proprietary and available anywhere.
- ① **SIZES RANGE FROM 25" TO 78"**.
- ① **CAPACITIES TO 180,000 CFM**, and pressures to 10" w.g.

Special features of Strobic Air variable in-flight vane axial fans:



Command-A-Pitch™

Variable in-flight vane axial fans

Submittal Data:

Customer: _____

Architect/Engineer: _____

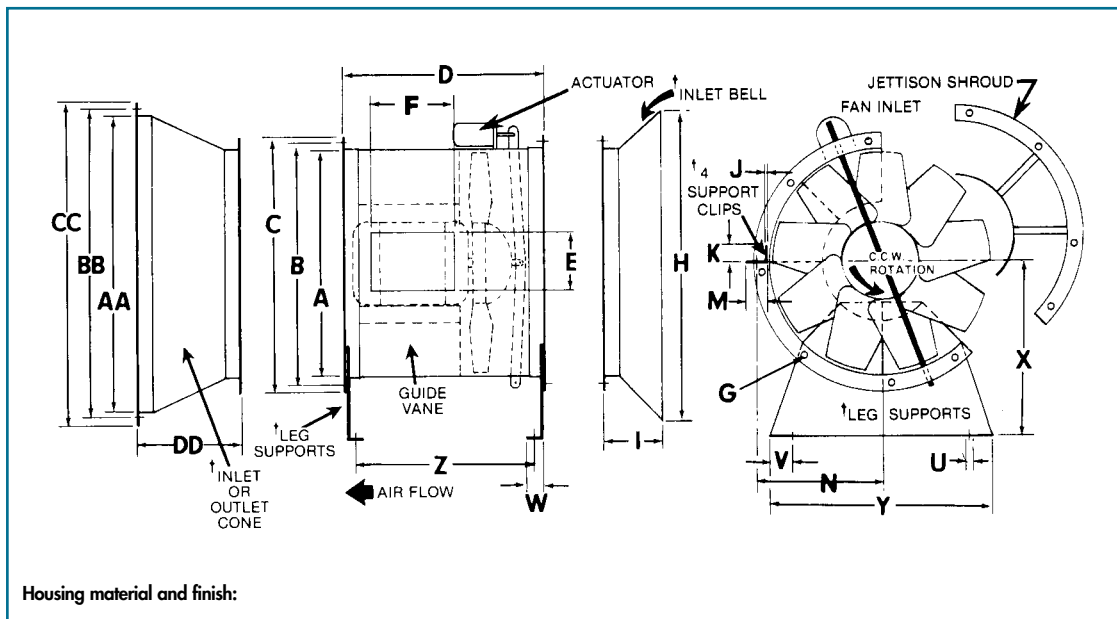
Project: _____

Drawing No.: _____ Date: _____

Submitted by: _____

Approved by: _____

Date: _____



- † **Optional Features:**
1. Inlet Bell
 2. Inlet or Outlet Cone
 3. Diffuser Cone
 4. Acoustical Diffuser Cone
 5. Inlet or Outlet Screen
 6. Mounted Pneumatic Actuator
 7. Jettison Shroud
 8. Access Door
 9. Companion Flanges
 10. Leg Supports
 11. Horizontal Support Clips
 12. Vertical Support Clips
 13. Disconnect Switch – Mounted
 14. In-line Sleeve Silencer
 15. In-line Pod Silencer
 16. _____
 17. _____
 18. _____
- Note: Extended motor and grease leads – standard

Housing material and finish:

FAN SIZE	BASIC FAN DIMENSIONS								BELL		SUPPORT CLIPS				LEG SUPPORTS				CONES						
	A	B	C	D	E	F	G		H	I	J	K	L	M	N	U	V	W	X	Y	Z	AA	BB	CC	DD
					Opt. Access Door		#	Dia.																	
25	25	28.25	29.75	36	8	10	12	.56	32.50	4.75	.25	3	3.5	5.0	15.50	0.75	2.5	4	21.00	30	31	30.00	32.50	35.00	24.00
27	27	30.25	31.75	36	10	12	12	.56	35.10	5.00	.25	3	3.5	5.0	16.50	0.75	2.5	4	21.00	31	31	33.75	36.25	38.75	22.50
30	30	33.25	34.75	36	10	12	12	.56	39.00	5.50	.25	3	3.5	5.0	18.00	0.75	2.5	4	23.00	34	31	38.00	40.50	43.00	24.75
36	36	39.25	40.75	42	10	12	12	.56	46.80	6.40	.25	3	3.5	5.0	21.00	0.75	2.5	4	26.25	41	37	44.00	46.50	49.00	27.00
38	38	41.25	42.75	42	10	12	12	.56	49.40	6.70	.25	3	3.5	5.0	22.00	0.75	4.5	4	28.25	48	37	48.00	50.50	53.00	31.00
42	42	45.50	47.75	42	12	14	12	.56	54.60	7.30	.38	3	3.5	5.0	24.00	1.00	4.5	4	29.25	48	37	50.75	53.50	55.75	31.00
45	45	48.50	50.75	42	12	14	16	.56	58.50	7.75	.38	4	4.5	5.0	25.50	1.00	4.5	4	32.25	48	37	54.00	56.75	59.00	31.00
48	48	51.50	53.75	48	12	18	16	.56	62.40	8.20	.38	4	4.5	5.0	27.00	1.00	4.5	4	34.25	48	43	60.00	62.75	65.00	37.00
54	54	57.50	59.75	48	12	18	16	.56	70.20	9.10	.38	4	4.5	5.5	30.25	1.00	4.5	4	37.25	60	43	66.00	68.75	71.00	37.00
60	60	64.25	66.75	48	12	18	16	.56	78.00	10.00	.50	4	4.5	5.5	33.25	1.00	4.5	4	40.50	60	43	72.00	75.50	78.00	37.00
66	66	70.25	72.75	60	15	20	16	.56	85.50	10.90	.50	4	4.5	5.5	36.25	1.00	4.5	4	44.50	66	55	80.00	83.50	86.00	43.00
72	72	76.25	78.75	60	15	20	16	.56	93.60	11.80	.50	4	4.5	5.5	39.25	1.00	4.5	4	48.50	72	55	88.00	91.50	94.00	49.00
78	78	82.25	84.75	60	15	20	16	.56	101.40	12.70	.50	4	4.5	5.5	42.25	1.00	4.5	4	53.00	78	55	96.00	99.50	102.00	55.00

Performance Data

ITEM #	Qty.	MODEL #	VOLUME CFM	SP/TP	FAN RPM	B.H.P.	H.P.	MOTOR RPM	MOTOR CHAR.	TYPE	OPTIONAL FEATURES	SHIP Wt.



FANS, SILENCERS AND SYSTEMS

160 Cassell Road, P.O. Box 144, Harleysville, PA 19438
 1-800-SAC-FANS, (215) 723-4700, FAX: (215) 723-7401



Represented by:

<http://www.lionballmotor.com>